

# VISIONLINK UNIFIED SUITE

HEALTH, LOCATION AND PRODUCTIVITY INFORMATION

VisionLink® offers a unified view of health, location and productivity for your fleet, regardless of manufacturer, providing actionable information for key decision-making to help you improve your bottom line. VisionLink Unified Suite mobile-ready applications include Unified Fleet, Unified Service, Unified Productivity and Administrator.



## VISIONLINK UNIFIED FLEET

VisionLink Unified Fleet's user-friendly screens display asset information to help better manage a mixed fleet, no matter the machine brand. Developed with the fleet or equipment manager and owner/operator in mind, VisionLink Unified Fleet's user-friendly and configurable dashboard displays information such as: hours, miles, fuel, odometer, locations, idle time, asset status, asset utilization and operation, and customer-defined asset states.



## VISIONLINK UNIFIED SERVICE

VisionLink Unified Service integrates health and maintenance information, delivering a complete picture of fleet health that allows users to proactively schedule maintenance while minimizing asset downtime. To stay operational and extend asset life, manage maintenance schedules and track machine health with VisionLink Unified Service.

## VISIONLINK ADMINISTRATOR

VisionLink Administrator unifies all of the applications by enabling users to define what is important, manage access and configure settings to optimize workflow. Designed to provide administrative functions across the VisionLink Unified Suite of applications, VisionLink Administrator allows user-assigned administrators to set up and manage users, geofences, asset settings, reports, notifications, workflows and more from a centralized location.



## VISIONLINK UNIFIED PRODUCTIVITY

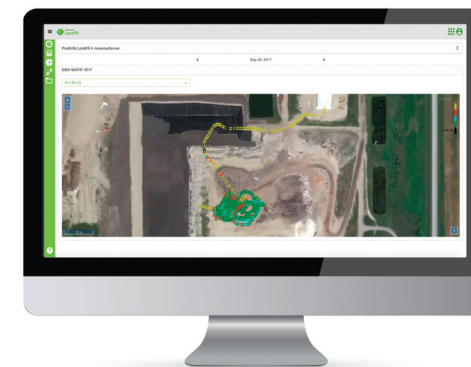
VisionLink Unified Productivity optimizes project productivity by monitoring the movement of materials against project or asset targets, helping project managers, foremen and operators maximize site efficiency in near real-time to keep projects on time and on budget. This application enables monitoring of payload, volumes, as well as other material movement metrics including load counts and cycle times.



## VISIONLINK 3D PRODUCTIVITY MANAGER

VisionLink 3D Productivity Manager provides a complete view of cut/fill, volume, and compaction data so you can leverage all of your jobsite data from machines, to surveys and drones for improved decision making. VisionLink provides actionable information for key decision-making to help improve your bottom line on any device at any time.

Boost your ROI from machine control investments by leveraging the power of VisionLink and combine survey and design data with machine data all in one software.



## VISIONLINK LANDFILL

The VisionLink Landfill application is designed to help you better manage your solid waste landfill. Developed with the Landfill Manager in mind, VisionLink Landfill tracks the compaction and fill processes at your site when coupled with landfill compactors that have Trimble CCS900 Compaction Control Systems or Cat AccuGrade Compaction Control Systems from Caterpillar or Trimble.

VisionLink Landfill can track the compaction efforts of these GPS-equipped compactors and can calculate the waste volumes placed and the compaction densities achieved in your active cells. Get better compaction and maximize the life of your landfill with VisionLink Landfill.