

Trimble WorksManager: How Does It Work?

1. Create Project
2. Create Design
3. Publish Design
4. Load Design
5. Manage and Monitor
6. Remote Assistance



Trimble WorksManager Software for construction



UPLOAD
DEALER LOGO

UPLOAD
TRIMBLE AUTHORIZED
DEALER LOGO

Trimble Civil Engineering and Construction
10368 Westmoor Drive
Westminster, Colorado 80021 USA
800-361-1249 (Toll Free)
+1-937-245-5154 Phone
construction_news@trimble.com
construction.trimble.com/worksmanager

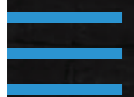
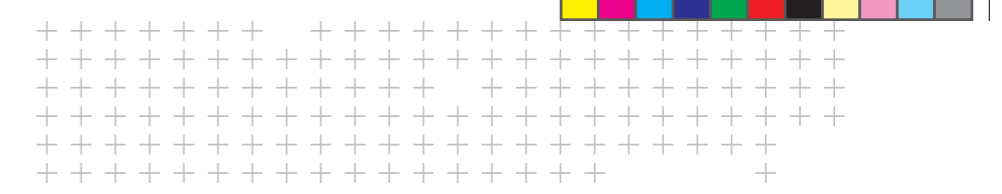
© 2019, Trimble Inc. All rights reserved. Trimble and the Globe & Triangle, are trademarks of Trimble Inc., registered in the United States and other countries. PN 022482-4158 (09/19)

Try it today at WorksManager.com

Transforming the way the world works.



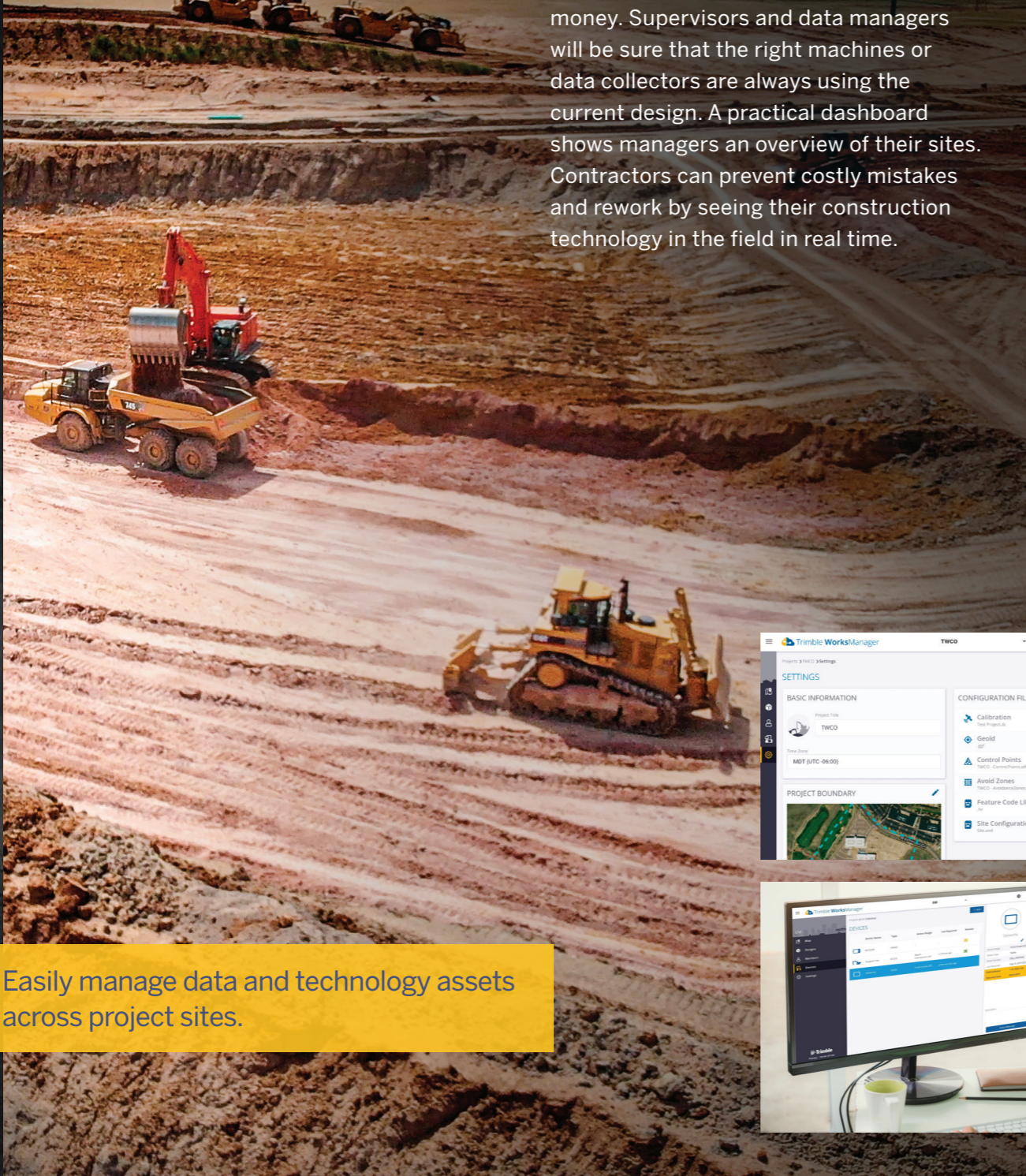
Transforming the way the world works.



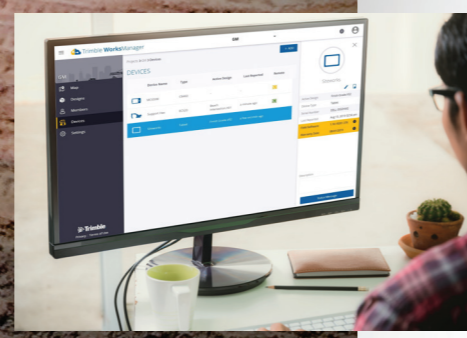
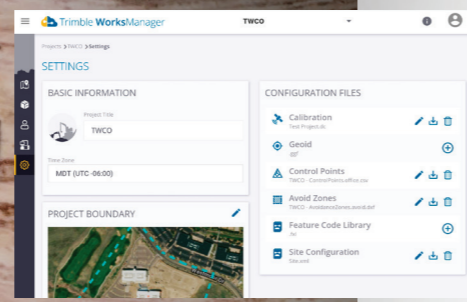
SEND over the AIR

Automatically transfer data to the field without ever leaving the office.

Trimble® WorksManager allows users to wirelessly transfer data such as 3D designs to the construction site, increasing efficiency and saving drive time and money. Supervisors and data managers will be sure that the right machines or data collectors are always using the current design. A practical dashboard shows managers an overview of their sites. Contractors can prevent costly mistakes and rework by seeing their construction technology in the field in real time.



Easily manage data and technology assets across project sites.



INTUITIVE SOFTWARE, SEAMLESS TRANSFER

Trimble WorksManager is the mobile friendly data hub connecting civil contractors to the critical information they need to get the job done right the first time, minimizing delays and downtime.

TRACK AND ASSIST YOUR ASSETS REMOTELY

The ability to track asset location and status puts the latest information in your hands to keep the project on track. Detailed real-time information about where the device is and what it is doing helps to avoid miscommunication.

To decrease drive time, remote assistant lets you troubleshoot issues in the field from the office. Efficiently support the team in the field so you can react quickly when things go wrong, and get everyone back to work.

UP TO DATE AND ACCURATE DATA

Machine locations update every 30 seconds and designs update every 5 minutes to ensure you have the latest information—make decisions quickly to stay under budget and minimize rework. Extend the range of your existing base station corrections so you can work with confidence over a larger area.

USER-FRIENDLY TRIMBLE INTEGRATION

WorksManager is optimized for the latest Trimble technology and integrates with the Trimble Earthworks Grade Control Platform, Trimble Siteworks Positioning System and Trimble Business Center.

